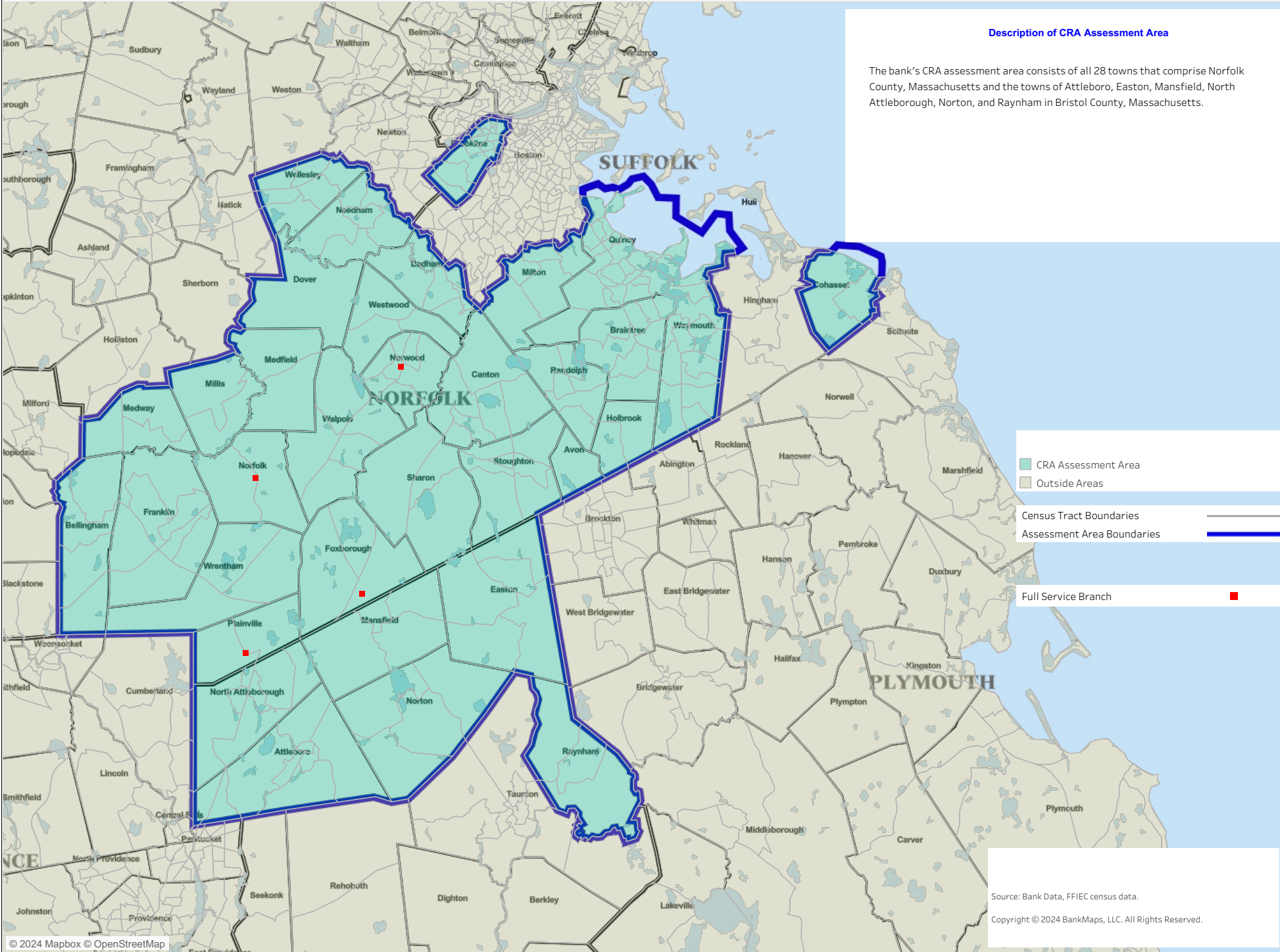


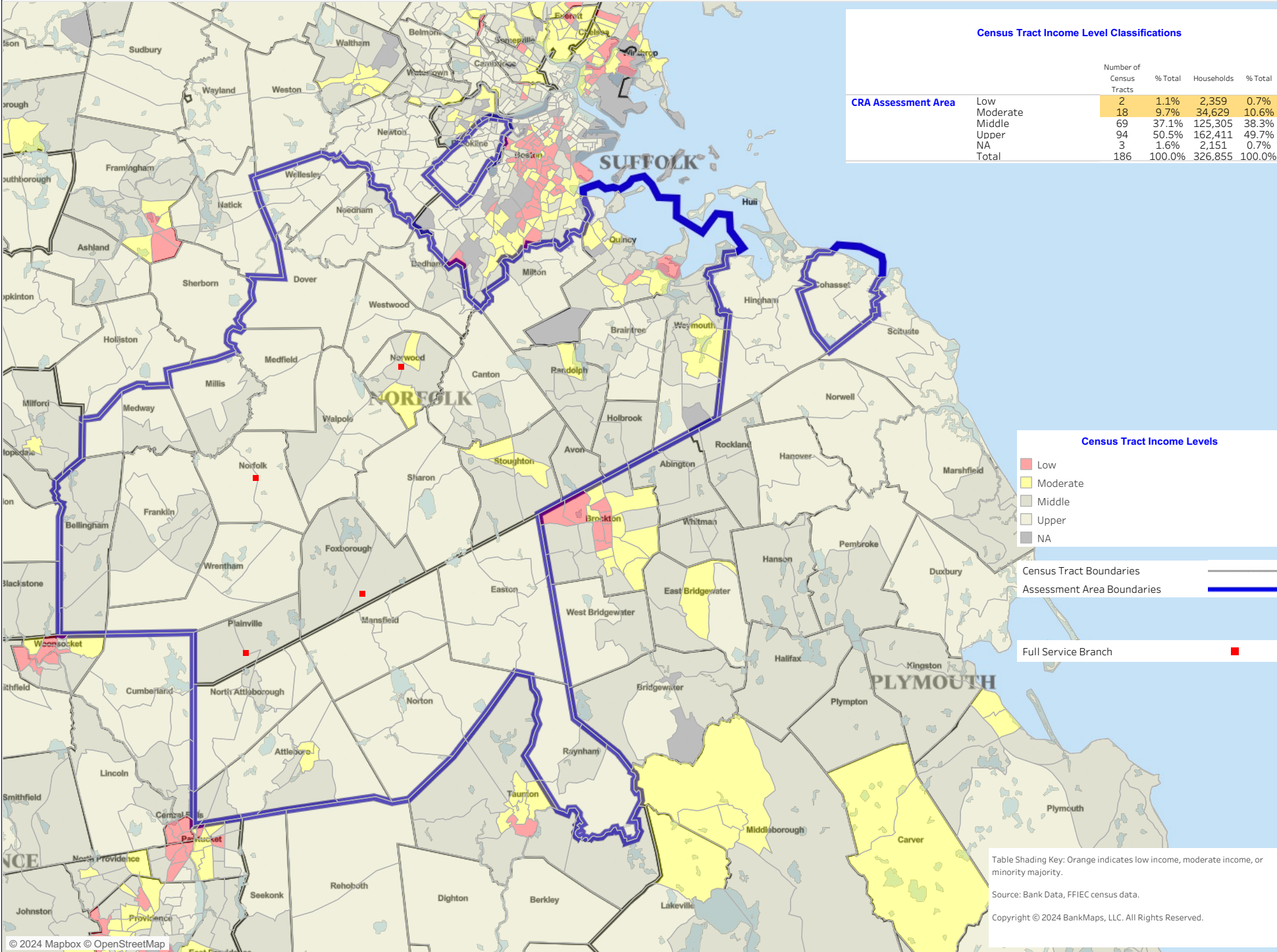
CRA Assessment Area Boundaries

OneLocal Bank - 2024



Income Level Classifications

OneLocal Bank - 2024



Census Tract Income Level Classifications

	Number of Census Tracts	% Total	Households	% Total
CRA Assessment Area				
Low	2	1.1%	2,359	0.7%
Moderate	18	9.7%	34,629	10.6%
Middle	69	37.1%	125,305	38.3%
Upper	94	50.5%	162,411	49.7%
NA	3	1.6%	2,151	0.7%
Total	186	100.0%	326,855	100.0%

Census Tract Income Levels

- Low
- Moderate
- Middle
- Upper
- NA

Census Tract Boundaries
 Assessment Area Boundaries

Full Service Branch ■

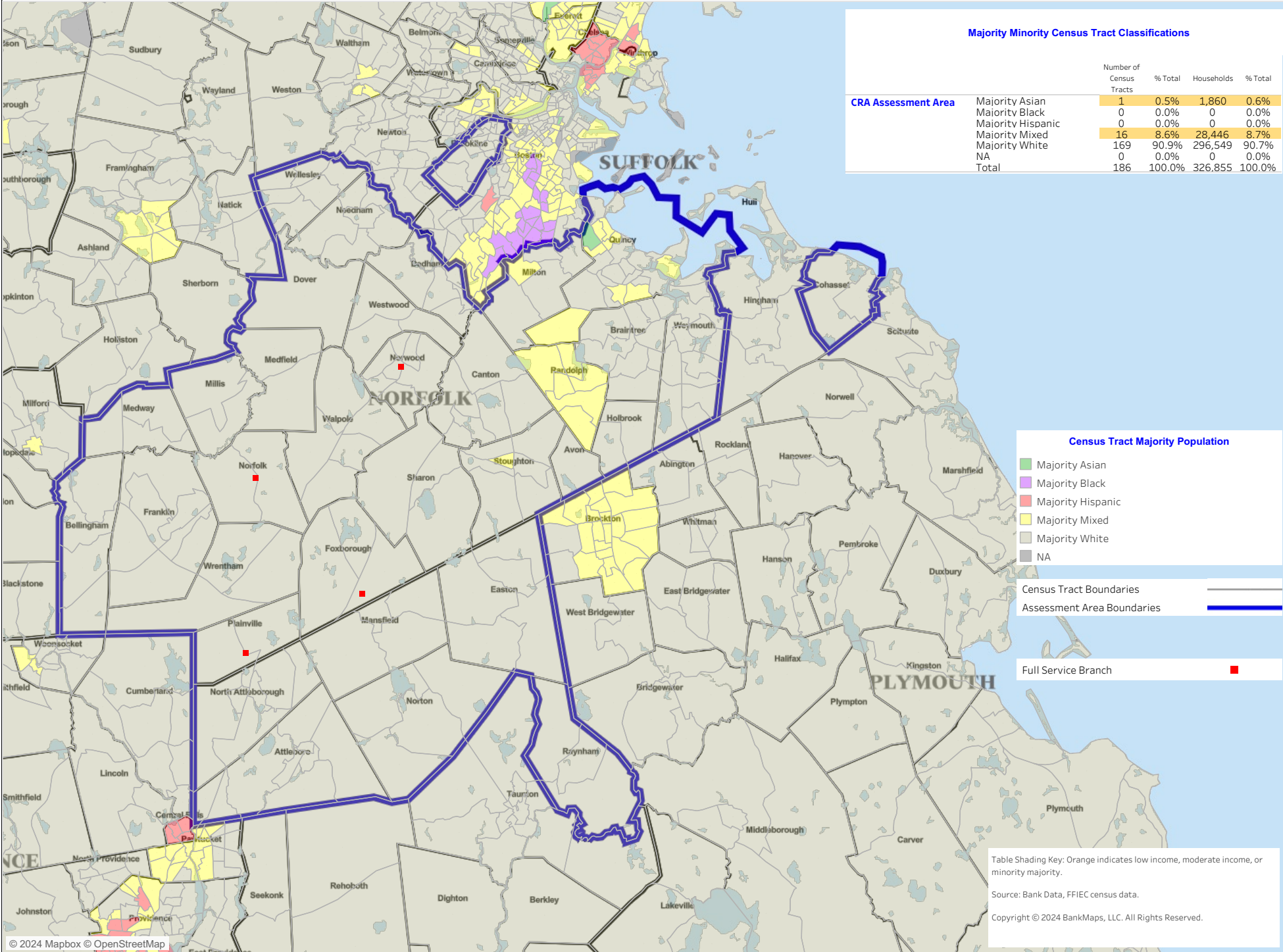
Table Shading Key: Orange indicates low income, moderate income, or minority majority.

Source: Bank Data, FFIEC census data.

Copyright © 2024 BankMaps, LLC. All Rights Reserved.

Majority Minority Classifications

OneLocal Bank - 2024



Majority Minority Census Tract Classifications

	Number of Census Tracts	% Total	Households	% Total
CRA Assessment Area				
Majority Asian	1	0.5%	1,860	0.6%
Majority Black	0	0.0%	0	0.0%
Majority Hispanic	0	0.0%	0	0.0%
Majority Mixed	16	8.6%	28,446	8.7%
Majority White	169	90.9%	296,549	90.7%
NA	0	0.0%	0	0.0%
Total	186	100.0%	326,855	100.0%

Census Tract Majority Population

- Majority Asian
- Majority Black
- Majority Hispanic
- Majority Mixed
- Majority White
- NA

Census Tract Boundaries
 Assessment Area Boundaries

Full Service Branch ■

Table Shading Key: Orange indicates low income, moderate income, or minority majority.

Source: Bank Data, FFIEC census data.

Copyright © 2024 BankMaps, LLC. All Rights Reserved.

Census Tract Demographics

OneLocal Bank - 2024

Area	County & State	Town	Tract	Income Level	Majority Category	Total Population	Percent Minority Population	Tract Median Family Income	MSA Median Family Income	Percent of MSA Median	Poverty Rate
CRA Assessment Area	Bristol County, MA	Attleboro	6311.01	Middle Income	Majority White	3,146	22.6%	\$84,137	\$89,555	94.0%	20.5%
			6311.02	Middle Income	Majority White	5,399	22.3%	\$78,352	\$89,555	87.5%	6.0%
			6312.00	Upper Income	Majority White	7,552	20.2%	\$129,155	\$89,555	144.2%	4.9%
			6313.00	Upper Income	Majority White	5,557	23.4%	\$125,645	\$89,555	140.3%	4.7%
			6314.00	Moderate Income	Majority White	2,889	43.0%	\$45,750	\$89,555	51.1%	19.7%
			6315.00	Middle Income	Majority White	2,888	24.9%	\$76,488	\$89,555	85.4%	16.2%
			6316.00	Moderate Income	Majority White	4,044	42.8%	\$58,320	\$89,555	65.1%	15.3%
			6317.00	Upper Income	Majority White	6,972	17.8%	\$130,318	\$89,555	145.5%	5.5%
		6318.00	Middle Income	Majority White	8,014	21.2%	\$95,773	\$89,555	106.9%	7.3%	
		Easton	6001.00	Upper Income	Majority White	4,030	13.3%	\$123,833	\$89,555	138.3%	6.3%
			6002.02	Upper Income	Majority White	4,814	21.0%	\$118,125	\$89,555	131.9%	3.2%
			6002.03	Upper Income	Majority White	6,386	16.7%	\$160,583	\$89,555	179.3%	2.7%
			6002.04	Upper Income	Majority White	4,095	20.3%	\$133,906	\$89,555	149.5%	1.7%
			9856.00	Upper Income	Majority White	5,733	14.5%	\$143,347	\$89,555	160.1%	9.4%
		Mansfield	6101.00	Upper Income	Majority White	5,359	17.5%	\$116,250	\$89,555	129.8%	2.6%
			6102.02	Upper Income	Majority White	5,660	14.9%	\$138,618	\$89,555	154.8%	5.2%
			6102.03	Upper Income	Majority White	6,818	12.2%	\$170,758	\$89,555	190.7%	0.4%
			6102.04	Upper Income	Majority White	6,023	24.6%	\$149,784	\$89,555	167.3%	5.6%
		North Attleborough	6301.01	Middle Income	Majority White	3,256	23.5%	\$82,414	\$89,555	92.0%	12.5%
			6301.02	Middle Income	Majority White	4,666	18.3%	\$91,856	\$89,555	102.6%	8.1%
			6302.01	Upper Income	Majority White	3,048	8.8%	\$131,389	\$89,555	146.7%	3.1%
			6302.02	Upper Income	Majority White	5,336	15.5%	\$129,771	\$89,555	144.9%	5.1%
			6303.01	Upper Income	Majority White	6,292	15.9%	\$144,519	\$89,555	161.4%	3.3%
			6303.02	Upper Income	Majority White	2,866	16.2%	\$109,861	\$89,555	122.7%	4.7%
			6304.00	Upper Income	Majority White	5,370	20.2%	\$140,694	\$89,555	157.1%	2.4%
		Norton	6111.01	Upper Income	Majority White	5,112	13.1%	\$116,731	\$89,555	130.3%	7.7%
			6111.02	Upper Income	Majority White	4,977	14.9%	\$145,673	\$89,555	162.7%	8.7%
			6112.01	Upper Income	Majority White	2,989	10.7%	\$119,494	\$89,555	133.4%	4.9%
			6112.02	Upper Income	Majority White	6,124	10.1%	\$115,735	\$89,555	129.2%	5.6%
		Raynham	6121.00	Upper Income	Majority White	4,716	13.2%	\$124,583	\$89,555	139.1%	6.9%
			6122.01	Middle Income	Majority White	3,886	18.2%	\$99,940	\$89,555	111.6%	8.9%
			6122.02	Upper Income	Majority White	6,540	16.5%	\$149,087	\$89,555	166.5%	2.8%
		Norfolk County, MA	Avon	4571.00	Middle Income	Majority White	4,777	36.4%	\$107,434	\$112,607	95.4%
	Bellingham			4431.03	Middle Income	Majority White	4,562	13.6%	\$125,500	\$112,607	111.4%
	Bellingham		4431.04	Middle Income	Majority White	4,763	14.9%	\$119,864	\$112,607	106.4%	2.2%
			4431.05	Middle Income	Majority White	2,080	13.9%	\$106,442	\$112,607	94.5%	5.9%
			4431.06	Middle Income	Majority White	5,540	15.4%	\$121,625	\$112,607	108.0%	2.0%
			Braintree	4191.00	Upper Income	Majority White	6,329	30.5%	\$138,633	\$112,607	123.1%
	4192.00			Upper Income	Majority White	5,177	27.0%	\$135,349	\$112,607	120.2%	3.9%
	4193.00			Middle Income	Majority White	4,000	38.8%	\$95,577	\$112,607	84.9%	7.4%
	4194.00			Middle Income	Majority White	3,211	30.0%	\$113,971	\$112,607	101.2%	4.8%
	4195.00			Upper Income	Majority White	3,481	32.5%	\$135,873	\$112,607	120.7%	2.3%
	4196.01		Upper Income	Majority White	1,600	39.6%	\$195,083	\$112,607	173.2%	8.5%	

Census Tract Classifications: Low or Moderate Income & Majority Minority Low or Moderate Income & White Majority Middle or Upper Income & Majority Minority

*Distressed **Underserved ***Distressed & Underserved

Source: FFIEC census data, US Census Bureau zip code data

Copyright © 2024 BankMaps, LLC. All Rights Reserved.

Census Tract Demographics

OneLocal Bank - 2024

Area	County & State	Town	Tract	Income Level	Majority Category	Total Population	Percent Minority Population	Tract Median Family Income	MSA Median Family Income	Percent of MSA Median	Poverty Rate
CRA Assessment Area	Norfolk County, MA	Braintree	4196.02	Upper Income	Majority White	5,913	20.5%	\$139,898	\$112,607	124.2%	4.2%
			4197.00	Upper Income	Majority White	4,716	32.1%	\$156,680	\$112,607	139.1%	2.2%
			4198.00	Middle Income	Majority White	4,716	29.4%	\$103,409	\$112,607	91.8%	6.5%
		Brookline	4001.00	Upper Income	Majority White	5,548	35.7%	\$177,917	\$112,607	158.0%	21.4%
			4002.01	Middle Income	Majority White	3,047	33.0%	\$123,125	\$112,607	109.3%	12.1%
			4002.02	Middle Income	Majority White	3,625	47.9%	\$92,065	\$112,607	81.8%	25.2%
			4003.00	Upper Income	Majority White	4,310	31.8%	\$165,682	\$112,607	147.1%	5.9%
			4004.01	Upper Income	Majority White	3,890	28.9%	\$144,563	\$112,607	128.4%	10.3%
			4004.02	Upper Income	Majority White	2,045	29.0%	\$250,001	\$112,607	222.0%	3.6%
			4005.00	Upper Income	Majority White	5,558	27.3%	\$145,909	\$112,607	129.6%	9.5%
			4006.00	Upper Income	Majority White	5,492	30.1%	\$171,563	\$112,607	152.4%	2.8%
			4007.00	Upper Income	Majority White	3,986	32.8%	\$181,538	\$112,607	161.2%	4.4%
			4008.00	Upper Income	Majority White	6,077	37.6%	\$160,250	\$112,607	142.3%	16.5%
			4009.00	Middle Income	Majority White	4,354	46.1%	\$115,833	\$112,607	102.9%	16.7%
			4010.00	Upper Income	Majority White	3,534	37.5%	\$166,292	\$112,607	147.7%	7.4%
			4011.00	Upper Income	Majority White	4,827	31.9%	\$250,001	\$112,607	222.0%	5.5%
			4012.01	Upper Income	Majority White	5,191	38.3%	\$235,074	\$112,607	208.8%	8.5%
		4012.02	Upper Income	Majority White	1,707	29.9%	\$250,001	\$112,607	222.0%	3.1%	
		Canton	4151.01	Upper Income	Majority White	4,774	22.4%	\$165,438	\$112,607	146.9%	1.2%
			4151.03	Middle Income	Majority White	4,749	30.0%	\$121,265	\$112,607	107.7%	5.4%
			4151.04	Middle Income	Majority White	3,310	25.4%	\$118,594	\$112,607	105.3%	3.1%
			4152.01	Upper Income	Majority White	4,020	43.7%	\$170,891	\$112,607	151.8%	4.8%
			4152.02	Middle Income	Majority White	3,263	22.6%	\$99,412	\$112,607	88.3%	2.1%
			4153.00	Upper Income	Majority White	4,254	18.1%	\$142,813	\$112,607	126.8%	3.2%
		Cohasset	4231.01	Upper Income	Majority White	3,849	7.1%	\$206,500	\$112,607	183.4%	11.5%
			4231.02	Upper Income	Majority White	4,532	7.3%	\$236,458	\$112,607	210.0%	3.0%
		Dedham	4021.01	Upper Income	Majority White	3,593	20.7%	\$149,773	\$112,607	133.0%	3.2%
			4021.02	Middle Income	Majority White	4,402	37.1%	\$99,338	\$112,607	88.2%	13.8%
			4022.00	Upper Income	Majority White	2,217	24.6%	\$137,569	\$112,607	122.2%	3.4%
			4023.00	Upper Income	Majority White	4,518	14.9%	\$164,201	\$112,607	145.8%	1.2%
			4024.00	Middle Income	Majority White	6,341	21.9%	\$127,054	\$112,607	112.8%	2.3%
			4025.00	Upper Income	Majority White	4,293	14.0%	\$193,889	\$112,607	172.2%	5.3%
		Dover	4051.00	Upper Income	Majority White	5,923	19.2%	\$250,001	\$112,607	222.0%	0.5%
		Foxborough	4101.00	Middle Income	Majority White	6,813	13.6%	\$123,393	\$112,607	109.6%	5.3%
			4103.00	Middle Income	Majority White	4,947	16.5%	\$121,711	\$112,607	108.1%	2.2%
			4104.00	Middle Income	Majority White	6,858	19.0%	\$113,668	\$112,607	100.9%	4.9%
		Franklin	4421.01	Middle Income	Majority White	5,797	14.9%	\$126,625	\$112,607	112.4%	2.0%
			4421.03	Upper Income	Majority White	7,009	13.8%	\$161,853	\$112,607	143.7%	4.8%
			4421.04	Upper Income	Majority White	5,565	14.0%	\$147,669	\$112,607	131.1%	6.4%
			4421.05	Middle Income	Majority White	1,894	18.8%	\$129,722	\$112,607	115.2%	5.3%
			4422.01	Upper Income	Majority White	4,362	12.9%	\$163,850	\$112,607	145.5%	4.5%
			4422.03	Middle Income	Majority White	4,249	18.0%	\$121,322	\$112,607	107.7%	5.3%
		4422.04	Middle Income	Majority White	4,385	15.2%	\$134,896	\$112,607	119.8%	9.1%	

Census Tract Classifications: ■ Low or Moderate Income & Majority Minority ■ Low or Moderate Income & White Majority ■ Middle or Upper Income & Majority Minority

*Distressed **Underserved ***Distressed & Underserved

Source: FFIEC census data, US Census Bureau zip code data

Copyright © 2024 BankMaps, LLC. All Rights Reserved.

Census Tract Demographics

OneLocal Bank - 2024

Area	County & State	Town	Tract	Income Level	Majority Category	Total Population	Percent Minority Population	Tract Median Family Income	MSA Median Family Income	Percent of MSA Median	Poverty Rate	
CRA Assessment Area	Norfolk County, MA	Holbrook	4211.00	Middle Income	Majority White	5,410	38.7%	\$104,038	\$112,607	92.4%	7.0%	
			4212.00	Middle Income	Majority White	5,995	30.5%	\$112,917	\$112,607	100.3%	5.9%	
		Medfield	4061.01	Upper Income	Majority White	6,081	13.5%	\$190,486	\$112,607	169.2%	3.4%	
			4061.02	Upper Income	Majority White	6,718	11.6%	\$223,889	\$112,607	198.8%	2.3%	
		Medway	4081.02	Middle Income	Majority White	4,932	12.4%	\$123,854	\$112,607	110.0%	9.7%	
			4081.03	Upper Income	Majority White	3,034	13.1%	\$182,750	\$112,607	162.3%	3.6%	
			4081.04	Upper Income	Majority White	5,149	10.2%	\$157,427	\$112,607	139.8%	3.2%	
		Millis	4071.01	Upper Income	Majority White	4,419	12.0%	\$143,059	\$112,607	127.0%	0.9%	
			4071.02	Middle Income	Majority White	4,041	12.0%	\$111,352	\$112,607	98.9%	1.5%	
		Milton	4161.01	Upper Income	Majority White	6,274	18.9%	\$194,805	\$112,607	173.0%	6.2%	
			4161.02	Upper Income	Majority White	4,005	27.9%	\$233,611	\$112,607	207.5%	1.7%	
			4162.00	Middle Income	Majority Mixed	6,913	51.5%	\$122,083	\$112,607	108.4%	10.0%	
			4163.00	Upper Income	Majority White	5,005	29.4%	\$187,083	\$112,607	166.1%	2.6%	
		Needham	4164.00	Upper Income	Majority White	6,454	15.1%	\$173,636	\$112,607	154.2%	4.3%	
			4031.00	Upper Income	Majority White	7,599	17.0%	\$233,158	\$112,607	207.1%	2.4%	
			4033.00	Upper Income	Majority White	4,431	15.6%	\$236,932	\$112,607	210.4%	1.4%	
			4034.00	Upper Income	Majority White	6,961	18.9%	\$189,050	\$112,607	167.9%	1.9%	
			4035.01	Middle Income	Majority White	2,851	25.1%	\$130,896	\$112,607	116.2%	6.2%	
			4035.02	Upper Income	Majority White	4,280	25.4%	\$202,917	\$112,607	180.2%	2.9%	
		Norfolk	4572.00	Upper Income	Majority White	5,969	16.5%	\$216,188	\$112,607	192.0%	1.6%	
			4091.01	Upper Income	Majority White	5,885	22.4%	\$168,750	\$112,607	149.9%	0.8%	
			4091.02	Upper Income	Majority White	5,777	9.3%	\$184,524	\$112,607	163.9%	0.6%	
			Norwood	4131.00	Middle Income	Majority White	6,494	22.1%	\$124,207	\$112,607	110.3%	8.0%
				4132.01	Moderate Income	Majority White	4,834	21.8%	\$70,500	\$112,607	62.6%	22.2%
		4132.02		Middle Income	Majority White	2,093	20.3%	\$128,421	\$112,607	114.0%	11.6%	
		4133.00		Upper Income	Majority White	5,083	19.2%	\$145,956	\$112,607	129.6%	2.3%	
		4134.01		Middle Income	Majority White	3,554	20.2%	\$115,556	\$112,607	102.6%	2.2%	
		4134.02		Middle Income	Majority White	4,901	44.5%	\$107,232	\$112,607	95.2%	3.6%	
		Plainville	4135.00	Moderate Income	Majority White	4,652	40.5%	\$85,000	\$112,607	75.5%	7.5%	
			4401.01	Middle Income	Majority White	6,608	15.6%	\$98,125	\$112,607	87.1%	4.8%	
			4401.02	Middle Income	Majority White	3,337	12.1%	\$110,952	\$112,607	98.5%	0.4%	
		Quincy	4171.00	Middle Income	Majority White	6,010	41.6%	\$96,091	\$112,607	85.3%	8.0%	
			4172.01	Moderate Income	Majority Asian	4,456	67.1%	\$77,471	\$112,607	68.8%	8.0%	
			4172.02	Not Available	Majority Mixed	4,059	58.3%	\$0	\$112,607	0.0%	11.1%	
			4173.00	Upper Income	Majority White	3,660	27.3%	\$142,163	\$112,607	126.2%	7.9%	
			4174.00	Middle Income	Majority White	2,656	11.4%	\$118,664	\$112,607	105.4%	2.5%	
			4175.01	Middle Income	Majority Mixed	5,291	56.0%	\$107,745	\$112,607	95.7%	5.5%	
			4175.02	Moderate Income	Majority Mixed	4,716	60.5%	\$86,694	\$112,607	77.0%	17.3%	
			4176.01	Moderate Income	Majority Mixed	5,249	51.3%	\$65,549	\$112,607	58.2%	10.5%	
			4176.02	Middle Income	Majority White	5,402	48.7%	\$108,472	\$112,607	96.3%	8.7%	
			4177.02	Middle Income	Majority White	2,826	22.0%	\$122,679	\$112,607	108.9%	11.2%	
		4177.03	Low Income	Majority White	3,004	44.4%	\$36,765	\$112,607	32.6%	26.6%		
			Middle Income	Majority White	3,689	45.8%	\$100,694	\$112,607	89.4%	2.5%		

Census Tract Classifications: Low or Moderate Income & Majority Minority Low or Moderate Income & White Majority Middle or Upper Income & Majority Minority

*Distressed **Underserved ***Distressed & Underserved
 Source: FFIEC census data, US Census Bureau zip code data
 Copyright © 2024 BankMaps, LLC. All Rights Reserved.

Census Tract Demographics

OneLocal Bank - 2024

Area	County & State	Town	Tract	Income Level	Majority Category	Total Population	Percent Minority Population	Tract Median Family Income	MSA Median Family Income	Percent of MSA Median	Poverty Rate	
CRA Assessment Area	Norfolk County, MA	Quincy	4178.01	Middle Income	Majority White	5,518	18.5%	\$117,375	\$112,607	104.2%	8.7%	
			4178.02	Low Income	Majority Mixed	3,217	58.6%	\$49,148	\$112,607	43.6%	22.6%	
			4179.01	Moderate Income	Majority White	8,127	45.6%	\$66,853	\$112,607	59.4%	12.8%	
			4179.02	Moderate Income	Majority White	3,786	49.3%	\$71,964	\$112,607	63.9%	14.6%	
			4180.02	Middle Income	Majority Mixed	7,444	54.6%	\$97,544	\$112,607	86.6%	6.9%	
			4180.03	Upper Income	Majority White	2,448	48.6%	\$147,500	\$112,607	131.0%	8.3%	
			4180.04	Moderate Income	Majority Mixed	5,043	52.6%	\$70,163	\$112,607	62.3%	9.8%	
			4181.01	Middle Income	Majority White	5,121	40.4%	\$116,136	\$112,607	103.1%	10.7%	
			4181.02	Moderate Income	Majority White	3,550	46.8%	\$79,615	\$112,607	70.7%	6.1%	
		Randolph	4182.01	Middle Income	Majority White	6,335	39.9%	\$110,820	\$112,607	98.4%	8.3%	
			9800.00	Not Available	Majority Mixed	8	87.5%	\$0	\$112,607	0.0%	-	
			4201.01	Middle Income	Majority Mixed	4,698	73.0%	\$103,569	\$112,607	92.0%	4.0%	
			4201.02	Moderate Income	Majority Mixed	4,122	69.2%	\$86,433	\$112,607	76.8%	14.9%	
			4202.01	Middle Income	Majority Mixed	3,576	72.8%	\$107,721	\$112,607	95.7%	6.7%	
			4202.02	Middle Income	Majority Mixed	7,404	76.6%	\$96,810	\$112,607	86.0%	8.2%	
			4203.01	Middle Income	Majority Mixed	7,295	71.7%	\$90,954	\$112,607	80.8%	8.7%	
			4203.02	Middle Income	Majority Mixed	7,889	75.0%	\$103,245	\$112,607	91.7%	10.0%	
			Sharon	4141.00	Upper Income	Majority White	5,862	39.0%	\$143,491	\$112,607	127.4%	1.6%
				4142.00	Upper Income	Majority White	7,549	32.7%	\$192,750	\$112,607	171.2%	0.1%
				4143.00	Upper Income	Majority White	5,164	27.4%	\$151,035	\$112,607	134.1%	2.4%
			Stoughton	4561.01	Middle Income	Majority White	4,115	39.8%	\$122,625	\$112,607	108.9%	3.2%
		4561.02		Moderate Income	Majority White	5,144	41.7%	\$86,625	\$112,607	76.9%	6.8%	
		4562.00		Middle Income	Majority White	4,040	43.5%	\$104,128	\$112,607	92.5%	4.1%	
		4563.01		Moderate Income	Majority Mixed	2,017	55.9%	\$73,498	\$112,607	65.3%	13.1%	
		4563.02		Moderate Income	Majority White	5,537	38.5%	\$87,778	\$112,607	78.0%	9.4%	
		4564.01		Middle Income	Majority White	2,886	35.1%	\$113,800	\$112,607	101.1%	5.1%	
		Walpole	4564.02	Middle Income	Majority White	5,542	28.9%	\$131,403	\$112,607	116.7%	2.8%	
			4111.01	Upper Income	Majority White	4,665	28.4%	\$137,075	\$112,607	121.7%	2.7%	
			4111.02	Upper Income	Majority White	4,670	10.3%	\$158,071	\$112,607	140.4%	1.5%	
			4112.00	Upper Income	Majority White	7,453	20.3%	\$168,776	\$112,607	149.9%	3.2%	
			4113.01	Upper Income	Majority White	6,072	9.8%	\$170,473	\$112,607	151.4%	2.0%	
		Wellesley	4113.02	Middle Income	Majority White	3,523	17.2%	\$118,241	\$112,607	105.0%	14.4%	
			4041.00	Upper Income	Majority White	4,456	33.6%	\$250,001	\$112,607	222.0%	7.6%	
			4042.01	Upper Income	Majority White	3,944	15.2%	\$250,001	\$112,607	222.0%	3.3%	
			4042.02	Upper Income	Majority White	5,040	30.1%	\$216,979	\$112,607	192.7%	3.7%	
			4043.01	Upper Income	Majority White	5,813	20.9%	\$250,001	\$112,607	222.0%	3.6%	
			4043.02	Upper Income	Majority White	3,825	29.1%	\$221,111	\$112,607	196.4%	1.9%	
		Westwood	4044.00	Upper Income	Majority White	6,472	30.2%	\$250,001	\$112,607	222.0%	5.0%	
			4121.00	Upper Income	Majority White	6,707	14.9%	\$205,129	\$112,607	182.2%	2.0%	
			4122.00	Upper Income	Majority White	3,899	14.5%	\$157,250	\$112,607	139.6%	2.0%	
		Weymouth	4123.00	Upper Income	Majority White	5,660	21.9%	\$159,600	\$112,607	141.7%	4.4%	
			4221.00	Upper Income	Majority White	5,354	16.7%	\$145,048	\$112,607	128.8%	4.2%	
			4222.01	Not Available	Majority White	2,277	31.1%	\$0	\$112,607	0.0%	-	

Census Tract Classifications: Low or Moderate Income & Majority Minority Low or Moderate Income & White Majority Middle or Upper Income & Majority Minority

*Distressed **Underserved ***Distressed & Underserved
 Source: FFIEC census data, US Census Bureau zip code data
 Copyright © 2024 BankMaps, LLC. All Rights Reserved.

Census Tract Demographics

OneLocal Bank - 2024

Area	County & State	Town	Tract	Income Level	Majority Category	Total Population	Percent Minority Population	Tract Median Family Income	MSA Median Family Income	Percent of MSA Median	Poverty Rate
CRA Assessment Area	Norfolk County, MA	Weymouth	4222.02	Middle Income	Majority White	6,961	21.1%	\$107,328	\$112,607	95.3%	6.6%
			4223.01	Middle Income	Majority White	3,432	16.0%	\$130,503	\$112,607	115.9%	3.1%
			4223.03	Moderate Income	Majority White	5,007	39.7%	\$85,040	\$112,607	75.5%	8.1%
			4223.04	Upper Income	Majority White	2,167	14.0%	\$180,125	\$112,607	160.0%	4.6%
			4224.01	Middle Income	Majority White	3,573	30.5%	\$105,117	\$112,607	93.3%	4.6%
			4224.02	Middle Income	Majority White	3,889	17.8%	\$120,029	\$112,607	106.6%	3.7%
			4225.01	Moderate Income	Majority White	4,847	27.8%	\$80,063	\$112,607	71.1%	9.2%
			4225.02	Moderate Income	Majority White	5,590	30.5%	\$79,691	\$112,607	70.8%	12.6%
			4226.00	Middle Income	Majority White	6,779	14.1%	\$126,083	\$112,607	112.0%	3.9%
			4227.00	Middle Income	Majority White	3,804	20.2%	\$103,922	\$112,607	92.3%	8.9%
			4228.00	Middle Income	Majority White	3,757	13.2%	\$115,313	\$112,607	102.4%	6.1%
			Wrentham	4412.02	Upper Income	Majority White	3,021	9.9%	\$187,500	\$112,607	166.5%
		4412.03		Upper Income	Majority White	4,112	8.7%	\$156,734	\$112,607	139.2%	4.1%
		4412.04		Upper Income	Majority White	5,045	12.2%	\$140,978	\$112,607	125.2%	3.7%

Census Tract Classifications: ■ Low or Moderate Income & Majority Minority ■ Low or Moderate Income & White Majority ■ Middle or Upper Income & Majority Minority

*Distressed **Underserved ***Distressed & Underserved

Source: FFIEC census data, US Census Bureau zip code data

Copyright © 2024 BankMaps, LLC. All Rights Reserved.